

Middle East and North Africa Monitoring Evaluation and Learning Services (MENA MELs)

Management Systems International (MSI), A Tetra Tech Company

Delivers high-quality monitoring, evaluation, and learning services to the Middle East Bureau and its Operating Units (OUs) to address regional initiatives and priorities, complements mission level MEL platforms and supports missions without platforms.

Offers a broad range of services and 40 years of experience

Services include strategic planning, performance management, research and design support, third-party monitoring, evaluations studies and assessments, MEL training and capacity building, GIS & data management support, data analysis and synthesis, strategic communications, knowledge

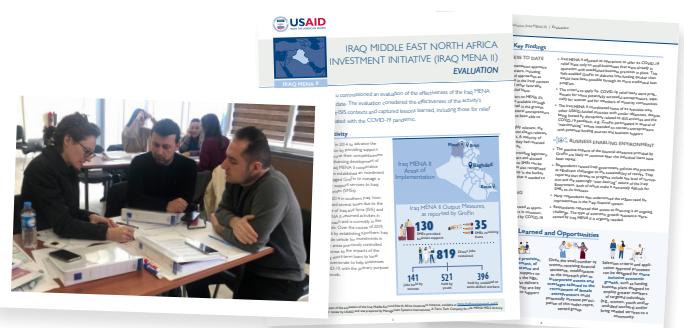
management and learning events. MENA MELs draws on MSI's regional expertise and a deep bench of seasoned MEL practitioners built over 40 years of MEL practice worldwide. This has enabled MENA MELs to quickly and cost effectively engage technical resources to design and implement activities.

Flexible, easy to use buy-in process



Strategic engagement with OUs during activity design and implementation

The MENA MELs team builds in regular check-ins with the OU during activity implementation to provide status updates and to solicit USAID feedback and guidance. Activity deliverables are developed to promote collaboration, learning and adapting such as: visual presentations to share initial findings and conclusions for OU feedback; OU and stakeholder workshops to review and finalize recommendations; and one to two-page briefers to disseminate key findings and lessons learned to wider audiences.



Current Buy-ins include:

- USAID/West Bank and Gaza
- USAID/Morocco
- USAID/Iraq
- USAID/Yemen
- USAID/Libya and Middle East Regional Program
- Middle East Bureau, Strategic Planning and Operations
- Middle East Religious and Ethnic Minority unit
- Middle East Bureau Outreach Office

Contact

COR | JESSICA POMERANTZ | JPOMERANTZ@USAID.GOV

CHIEF OF PARTY | CHRISTINE MULLIGAN | CHRISTINE.MULLIGAN@MSI-INC.COM

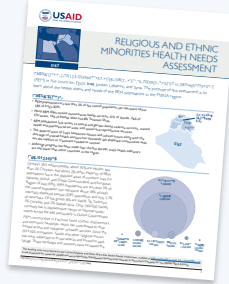


Illustrative Examples of MENA MELS Current and Completed Activities

ASSESSING HEALTH NEEDS AND ACCESS TO HEALTH SERVICES OF MARGINALIZED POPULATIONS

RAPID ASSESSMENT OF HEALTH NEEDS AND ACCESS TO SERVICES OF REM POPULATIONS IN MENA:

Under a FY 2020 buy-in from the Middle East Bureau's Religious and Ethnic Minority (REM) program, MENA MELS conducted a rapid assessment of the health needs and access to services of REM populations in Egypt, Iraq, Jordan, Lebanon, and Syria.



LGBTQI+ ASSESSMENT: In FY 2021, the Middle East Bureau supported a MENA MELS rapid assessment of lesbian, gay, bisexual, transgender, queer/questioning and intersex (LGBTQI) access to formal and informal health services in the Middle East and North Africa (MENA) region.

LEARNING AND CAPACITY BUILDING SUPPORT

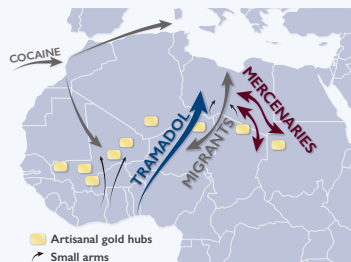
PHOTOGRAPHY TRAINING FOR USAID IMPLEMENTING PARTNERS: The Bureau's Outreach Office engaged MENA MELS to conduct a series of workshops for USAID MENA implementing partners to improve the quality of photographs in program reporting and communications. It is the first workshop with over 300 participants focused on foundational photography principles and related lessons for non-professional photographers seeking practical solutions in various USAID Middle East contexts.

MEL TRAINING FOR LOCAL IRAQ IMPLEMENTING PARTNERS: USAID/Iraq, REM and the New Partners Initiative engaged MENA MELS to conduct MEL training of six new USAID partners including hands-on support and coaching.

SUPPORT FOR MIDDLE EAST BUREAU STRATEGIC PLANNING ACTIVITIES

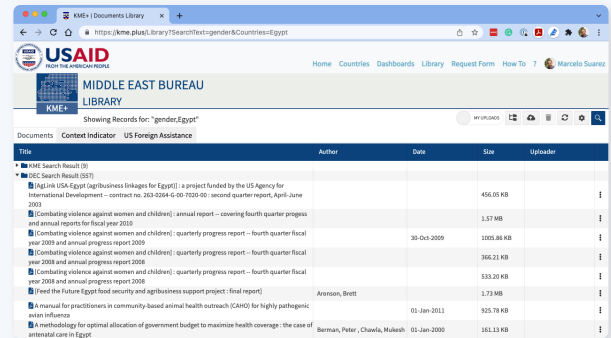
In FY 2021 and 2022 the Middle East Bureau engaged MENA MELS' support for several interagency strategic planning activities including facilitation support to develop the Middle East USAID-US Department of State (DOS) Joint Regional Strategy, facilitation support for developing the USAID-DOS Syria Stabilization Assistance Strategy, and support for a series of workshops with interagency stakeholders to coordinate contingency planning for the worsening security and political situation in Lebanon.

LIBYA RAPID STUDIES: MEB regional programming, the Libya Desk and Mission engaged MENA MELS to conduct two rapid studies to inform MEB regional and Libya programming: the FY20 Cross Border Influences of Extremism, Conflict and Illicit Economies and Scenario Analysis; and the FY21 Libya Conflict and Scenario Analysis: Key Developments and Implications for US Policy and Programming.



GIS, DATA MANAGEMENT SYSTEMS AND KNOWLEDGE MANAGEMENT SUPPORT

KME+: MENA MELS is developing a knowledge management portal for the Middle East Bureau. It is a repository of relevant context information as well as products developed by the Bureau and its operating units, along with an improved search tool for accessing documents from the DEC. KME+ also houses the US Foreign Assistance to the Middle East and North Africa, including the USAID MENA Portfolio, which is updated daily automatically.



DIS ROLL-OUT SUPPORT: MENA MELS is providing staff support for the roll-out of USAID's performance management module of the Development Information Solution (DIS) to 12 OUs and missions in the MENA region.

DESK REVIEW OF EARLY WARNING SYSTEMS: REM's program team engaged MENA MELS to provide a preliminary analysis of key considerations specifically regarding data collection, validation, aggregation, and analysis, for the design of a REM-focused monitoring system and/or an EWs that would track signs of rising tensions or risk of mass atrocity events across the region.

MEL SUPPORT TO MENA MISSIONS

USAID/MOROCCO MEL SUPPORT SERVICES: MENA MELS is providing a full suite of MEL services to USAID/Morocco through annual buy-ins to support implementation of the Mission's CDCS, starting with support for development and implementation of the Mission's PMP. Support includes performance management activities, design and implementation of evaluations, assessments and studies; and MEL training and support for a USAID/Morocco-IP MEL community of practice.

USAID/WEST BANK AND GAZA MEL SERVICES: The MENA MELS team is supporting the West Bank and Gaza Mission with a wide range of MEL services including third-party monitoring, support for developing its PMP, data quality assessments (DQAs), MEL capacity building and training and evaluations, assessments and studies including a TVET gender assessment and USAID perception study.

USAID/YEMEN COMMUNITIES STRONGER TOGETHER (YCST) FINAL EVALUATION: MSI is conducting the final evaluation of YCST to help USAID design a new governance, peace, and stability activity focused on community resilience, making lessons learned from YCST's community engagement model immediately applicable.

USAID/IRAQ, PROGRAM OFFICE STAFF SUPPORT: Through a FY 2021 buy-in MENA MELS is providing STTA MEL staff support to the Program Office for one year.