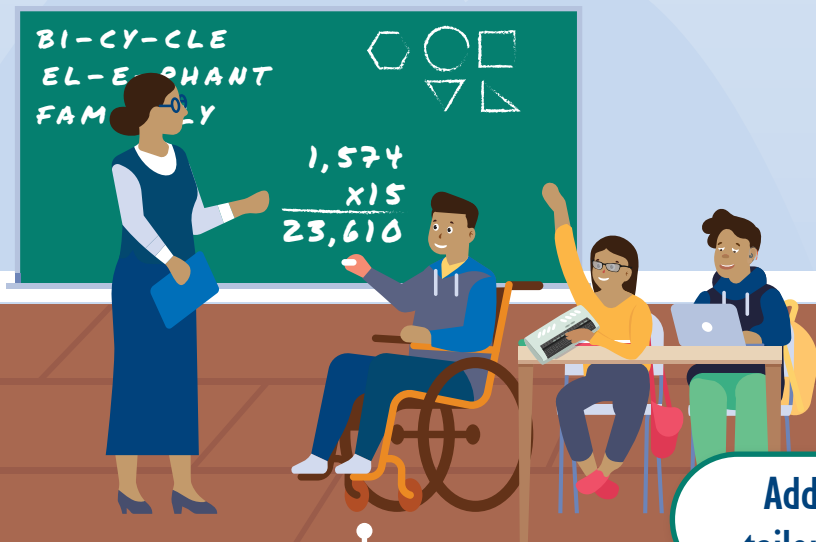
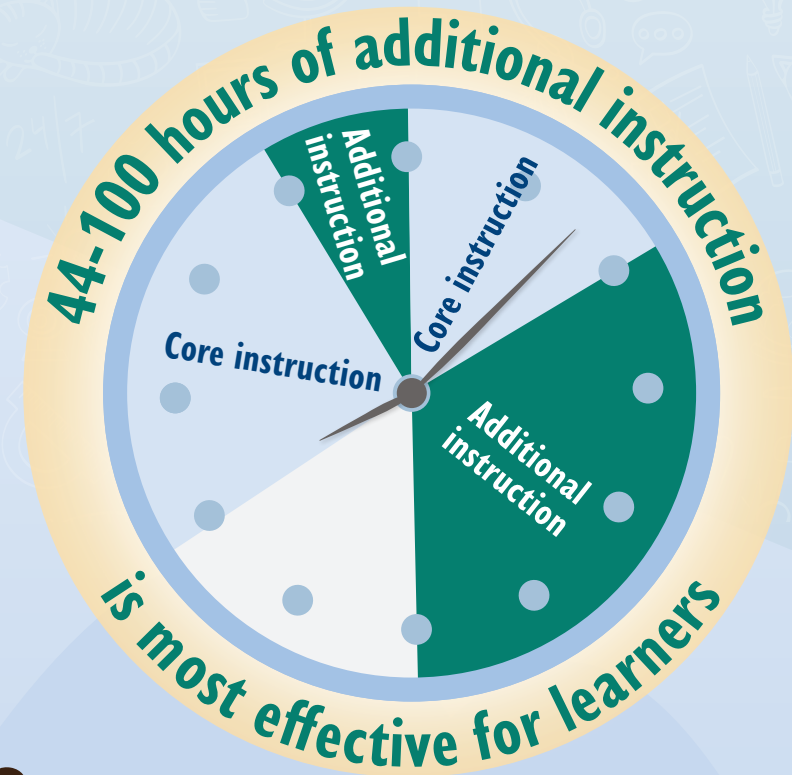


Remedial Learning (RL) IN THE CLASSROOM

Remedial learning (RL) frameworks play a crucial role in mitigating learning loss and supporting students in the post-pandemic world. Remedial learning involves providing additional, targeted support to learners struggling with one or more subject areas by **offering short-term content or skill assistance**. It can be implemented in diverse educational environments, with the primary goal of ensuring these students receive the necessary support to succeed in regular formal education. These flexible approaches contribute to the recovery of learning loss.



Benchmark assessments & Early warning systems

Additional instruction tailored to learner needs

Tutoring or remedial learning facilitation:

Aligned with curriculum	Administered to small groups or individual learners
--------------------------------	--

Learners are grouped based on assessment results

